

G304B Series

Sealed Clip Type Subminiature Micro Switch



■ Features

- ◆ High reliability and good resistance to environment, sealed micro switch with long travel
- ◆ With long travel, can work easily even without lever
- ◆ High reliability sliding contact structure
- ◆ With high temperature resistance(+85 °C) and drip-proof structure, can be widely applied in different environment, IP67 rated (except for terminals)
- ◆ Widely applied for home appliances, electronic equipment, automatic equipment, communication equipment, auto electronics, apparatus and instruments, electrical tools etc.

■ Application

- ◆ Home Appliances
- ◆ Electronic Equipment
- ◆ Automatic Equipment
- ◆ Communication Equipment
- ◆ Auto Electronics
- ◆ Apparatus and Instruments
- ◆ Power Tools

■ Parameters:

Operation Speed	1 ~ 500mm/s (Related to the driving method)	
Operation Frequency	120 cycles/min.	
Insulation Resistance	≥100MΩ	
Contact Resistance (Initial Value)	With terminals type	≤100mΩ
	With wire type	≤200mΩ (Standard wire length 300mm)
Voltage Resistance	Between terminals	AC600V, 50/60Hz, 1min.
	Between each terminal and the non-electrical metal parts	AC1,500V, 50/60Hz, 1min.
Operating Life	Electrical	300,000 cycles (15 cycles/min.) 0.1A 12VDC 50μA 5VDC
	Mechanical	300,000 cycles (30 cycles/min.)
Operating Temperature	-40~+85°C	
Operating Humidity	85%RH Max.	

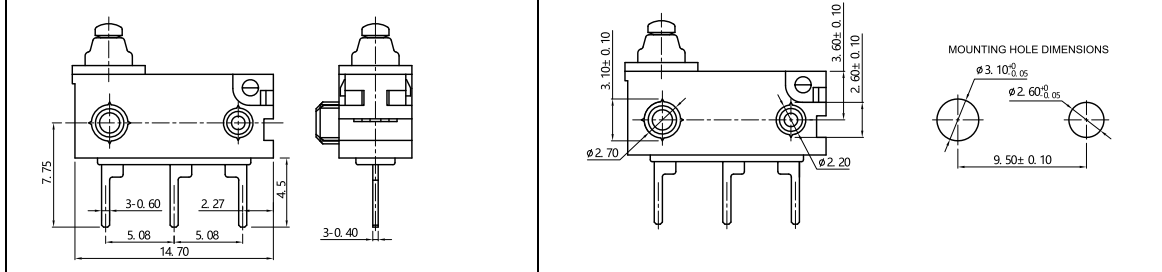
G304B Series Micro Switch Ordering Instruction

U	LOGO	Unionwell	Other
T001	Custom Code	General	Customized according to requirements, the code format is T+serial number XXX, for example: T001
2	Assembly Type	1 No Posts	2 Φ3.1X5.0mm Posts at Left Side
			3 Posts at Right Side
C	Circuit Code	A SPDT	B SPST-NC
			C SPST-NO
00	Lever Type	00 No Lever Pin Plunger	01 Leaf Lever
			02 Straight Leaf Lever
			05 Simulated Roller
			Other
P	Terminal Type	P Straight PCB Terminals	Other
150	Max Operating Force at Pin Plunger	150 150gf Max.	Other
G304B	Switch Type	G304B Series Micro Switch Ordering Instruction	

Unionwell

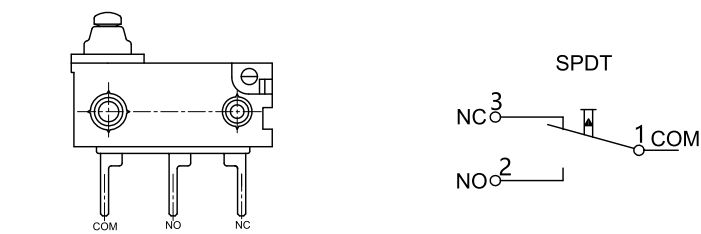
Terminals Type

◆ Straight PCB terminal



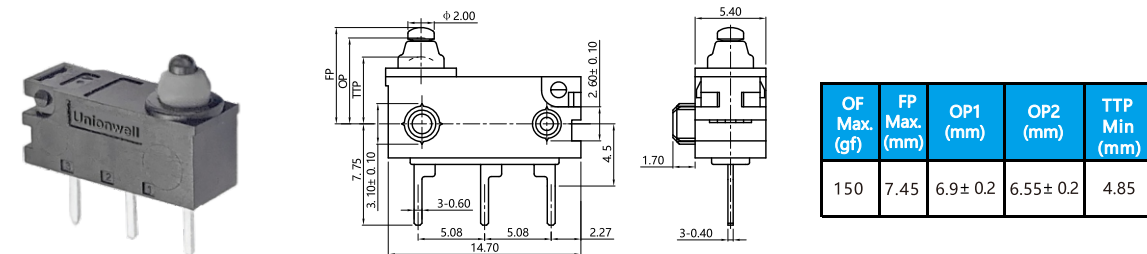
Basic Mounting Dimensions and Operating Characteristics

Circuit

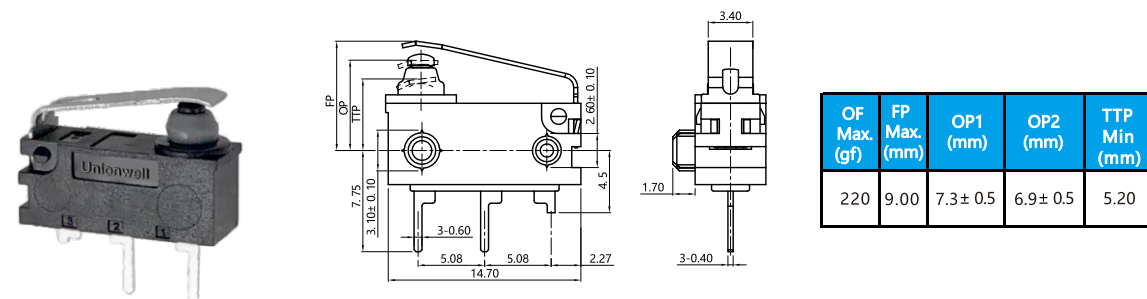


Dimensions and Operating Characteristics

◆ G304B-150P00A2U



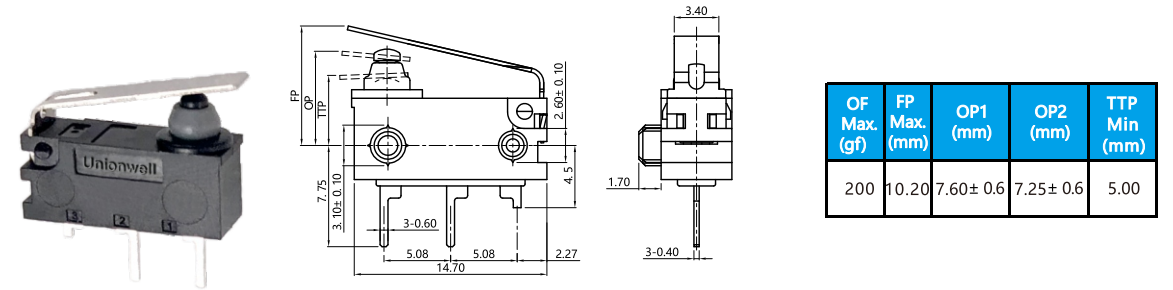
◆ G304B-150P01C2U



Unionwell

Dimensions and Operating Characteristics

◆ G304B-150P02C2U



◆ G304B-150P00C2U

