

G304F Mini Sealed Micro Switch



■ Features

- Designed For Water and Dust Tight(IP67)
- Small Compact Size
- Long Life and High Reliability
- Variety of Levers
- Wide Range of Wiring Terminals
- Widely used in Automotive Electronics,Appliance and Industrial Control etc.
- Customized Designs
- Slide Structure
- Non Short Circuit Conversion

■ Application

- ◆ Car
- ◆ Air-Conditioner
- ◆ Communication
- ◆ Electric Tooth Brush
- ◆ Toys

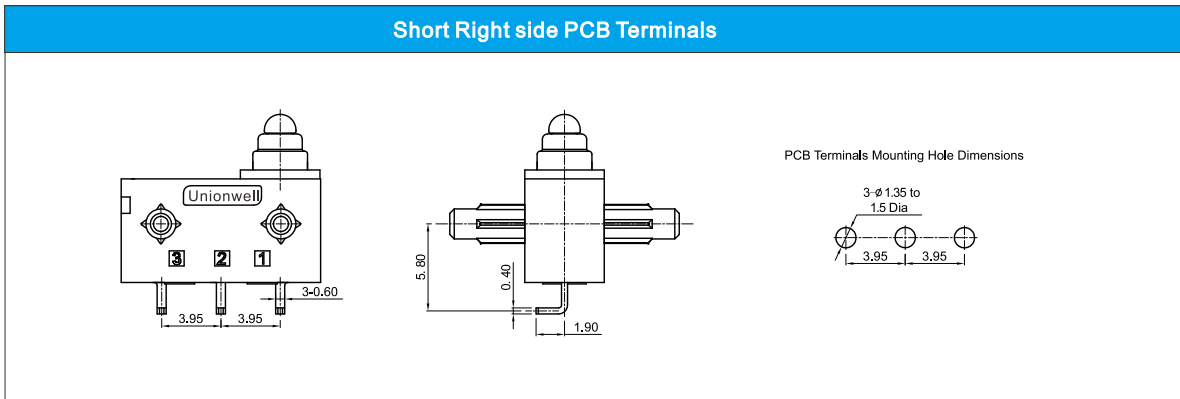
■ Parameters

| | | |
|---------------------------------------|---|---|
| Operation Speed | | 1~500mm/s |
| Operating Frequency | | 120cycles /min |
| Insulation Resistance | | ≥100mΩ(DC500V) |
| Contact Resistance (Initial Value) | with terminals type | ≤100mΩ |
| | with wire type | ≤100mΩ(300mm length) |
| Voltage Resistance | Between terminals | AC500V,50/60Hz,1min. |
| | Between terminals and uncharged metal parts | AC1000V,50/60Hz,1min. |
| Vibration | No transformation action | 10-55HZ |
| Service Life | Electrical | 300000 cycles (20 cycles /min) 0.1A 12VDC 50 μA 3VDC |
| | Mechanical | 300,000 cycles (30cycles /min) |
| Protection Level | | IEC IP67 |
| Storage Temperature | | -40~+85° C 60%RH |
| Storage Humidity | | 95%RH(+5C~+35° C) |

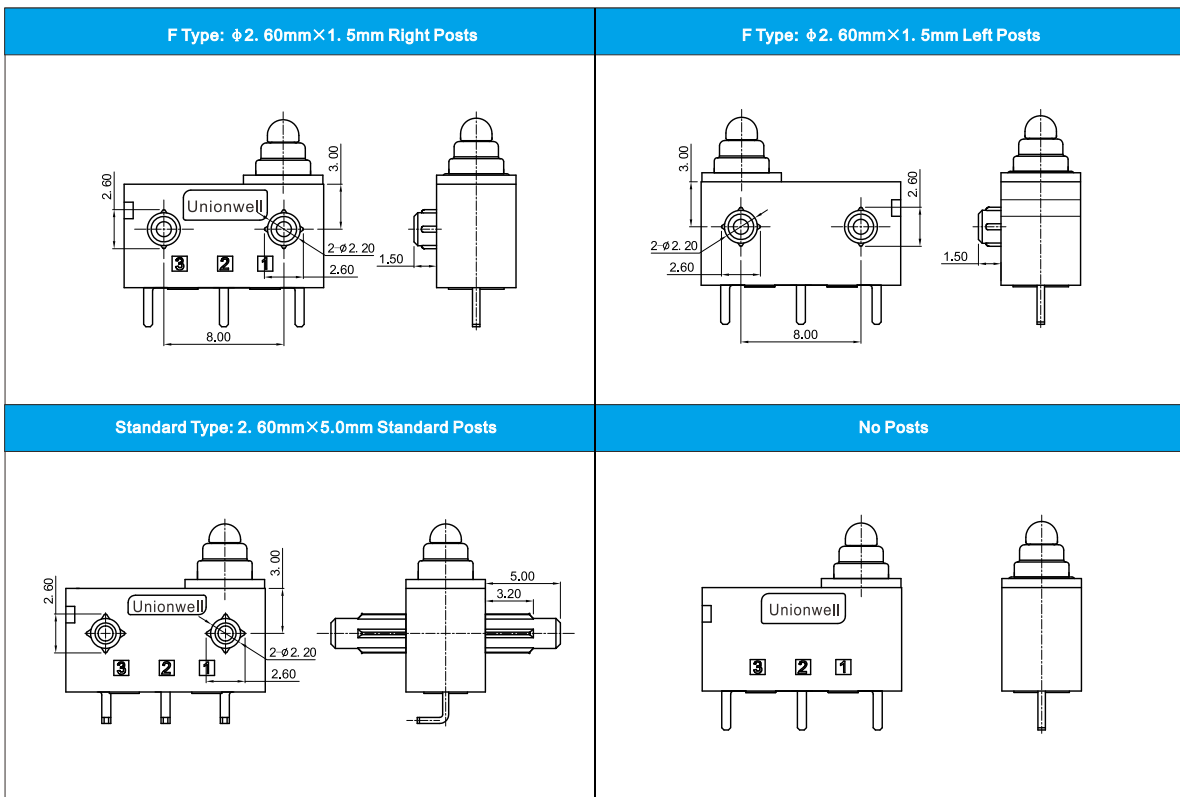
G304 F-Type Series Micro Switch Ordering Instruction

| G3 | 04 | 150 | P | 00 | E | 39 | | | G | A | 280 | |
|------------------------|-------------------|-------------------------------------|----------------|------------|--------------|-----------------|-----------------------------|-----|-------------------------------|---------------------------------|--|--------------------|
| Switch Type | Electrical Rating | Overload Force at pin Plunger, Max. | Terminal Style | Lever Type | Circuit Code | Shape and Posts | Posts Dimension | | AWG Type (for Wire type only) | AWG Number (For Wire type only) | Wire length | Special Designator |
| G3 Series Micro Switch | 04 | 0,1A12VDC 50mA3VDC | P | 00 | D | 35 | Standard posts:2.60mmx5.0mm | | No molded lead wires | No molded lead wires | 300mm length standard lead wires 300mm | S |
| | --- | Other | K | 28 | G | 36 | G ϕ 2,6X1,5mm posts. | E | 20# | A | 280 | B |
| | --- | Other | W | 08 | B | 37 | H ϕ 2,6X2,0mm posts. | F | 22# | C | --- | C |
| | | | | | C | 38 | I ϕ 2,2X0,8mm posts. | G | 24# | D | | E |
| | | | | | --- | 46 | K 7,3X1,2X1,2mm posts. | H | 26# | E | | --- |
| | | | | | --- | --- | --- | I | 28# | F | | |
| | | | | | | | | J | 30# | H | | |
| | | | | | | | | K | 32# | G | | |
| | | | | | | | | L | 34# | --- | | |
| | | | | | | | | --- | Other | | | |

■ Switch Terminals Type (Can be customized)

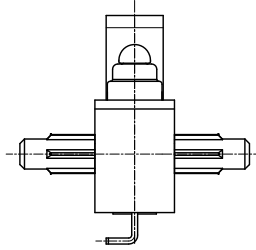
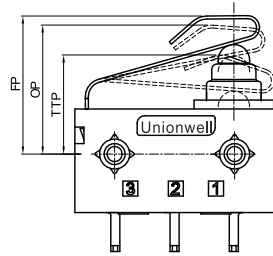


■ Posts Type



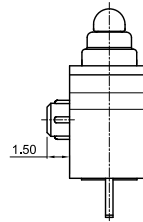
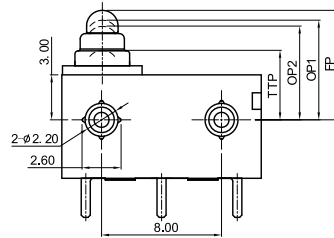
■ Dimensions and Operating Characteristics

◆ G304-150W26D46



| OF Max (gf) | TTP Min (mm) | FP Max (mm) | OP (mm) |
|-------------------|--------------------|-------------------|---------------------|
| 300 | 6.6 | 9.8 | 8.6 (+0.5,-0.35) |

◆ G304-150P00D36G



| OF Max (gf) | TTP Min (mm) | FP Max (mm) | OP-NC (mm) | OP-NO (mm) |
|-------------------|--------------------|-------------------|---------------|---------------|
| 150 | 4.8 | 7.9 | 6.8±0.3 | 6.5±0.3 |