

## G304B Mini Sealed Micro Switch



### Features

- High reliability and good resistance to environment, sealed micro switch with long travel
- With long travel, can work excellently even without lever
- High reliability sliding contact structure
- With high temperature resistance(+85 °C)and drip-proof structure, can be widely applied in different environments, IP67 rated (except for terminals)
- Widely applied for home appliances, electronic equipments, automatic equipments, communication equipments, auto electronics, apparatus and instruments, electrical tools etc.

### Application

- Home Appliance
- Electronic Equipments
- Automatic Equipments
- Communication Equipments
- Auto Electronics
- Apparatus and Instruments
- Power Tools

### Parameters:

Operation Speed		1~500mm/s
Operation Frequency		120 cycles /min
Insulation Resistance		≥ 100mΩ (DC 500V)
Contact Resistance (Initial Value)	with terminals type	≤ 100mΩ
	with wire type	≤ 200mΩ
Voltage Resistance	Between terminals	600VAC, 50/60Hz, 1min.
	Between terminals and uncharged metal parts	1500VAC, 50/60Hz, 1min.
Service Life	Electrical	300000 cycles (20 cycles/min) 0.1A 12VDC 50 μA 5VDC
	Mechanical	300,000 cycles (30 cycles/min)
Storage Temperature		-40°C ~ +85°C
Storage Humidity		85% RH Max

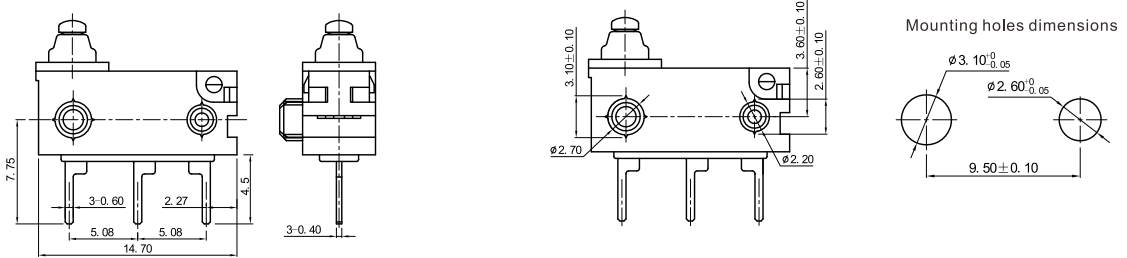
**G304B Series Micro Switch Ordering Instruction**

G304B	Switch Type	G304B Series Micro Switch Ordering Instruction			
150	Max Operating Force at Pin Plunger	150	150gf Max	...	Other
P	Terminal Type	P	Straight PCB Terminals	...	Other
00	Lever Type	00	No lever Pin Plunger	01	Leaf Lever
		02	Straight Leaf Lever	05	Simulated Roller
					...
C	Circuit code	A	SPDT	B	SPST-NC
		C	SPST-NO		
2	Mounting Options	1	NO mounting post	2	$\phi$ 3.1X5.0mm Left mounting posts
		3	$\phi$ 3.1X5.0mm Right mounting posts		
TXXX	Custom code		General	TXXX	Custom model
					Other
					...

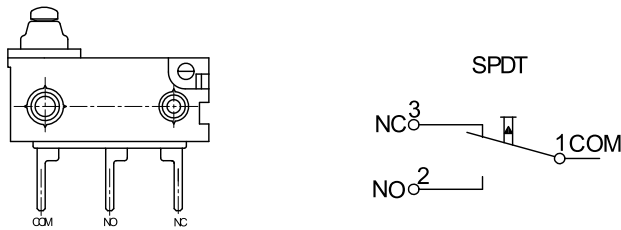
**Terminals Type**

**Basic Mounting Dimensions and Operating Characteristics**

**◆ Straight PCB Terminals**

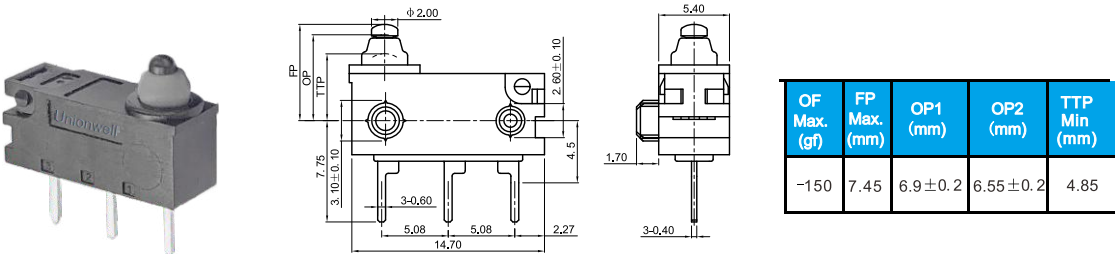


**Circuit**

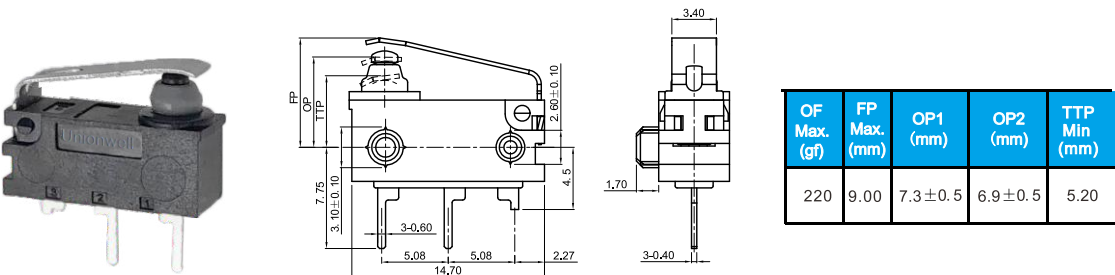


**Dimensions and Operating Characteristics**

**◆ G304B-150P00A2**

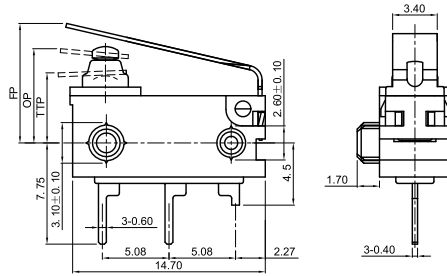


**◆ G304B-150P01C2**



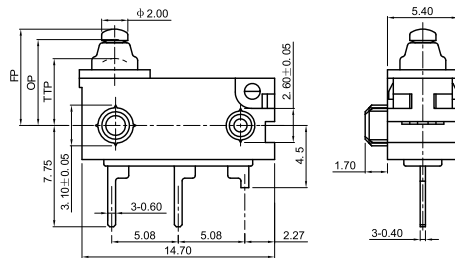
**Dimensions and Operating Characteristics**

◆ **G304B-150P02C2**



OF Max. (gf)	FP Max. (mm)	OP1 (mm)	OP2 (mm)	TTP Min (mm)
200	10.20	7.60±0.6	7.25±0.6	5.00

◆ **G304B-150P00C2**



OF Max. (gf)	FP Max. (mm)	OP1 (mm)	OP2 (mm)	TTP Min (mm)
150	7.45	6.9±0.2	6.55±0.2	4.85